

Application:

EAJ series conduit outlet boxes are installed in conduit systems within hazardous areas to:

- protect conductors in threaded rigid conduit
- act as pull and splice boxes
- interconnect lengths of conduit
- change conduit direction
- provide access to conductors for maintenance and future system changes

Features:

EAJ conduit outlet boxes have:

- water shedding cover – suitable for wet locations when mounted in upright position
- external cover threads on body protecting conductors from damage during pulling
- no pinching of conductors during cover installation
- six different hub arrangements
- taper threaded hubs to provide ground continuity
- smooth integral hub bushing to protect conductor insulation when pulling
- internally threaded cover openings for additional wiring room
- flat overlapping threaded covers furnished with boxes
- weather-resistant finish
- green ground screw standard in all boxes
- four standard mounting pads, except for EAJB and EAJD

Standard Materials:

- Body – *Feraloy*® iron alloy
- Cover – copper-free aluminum

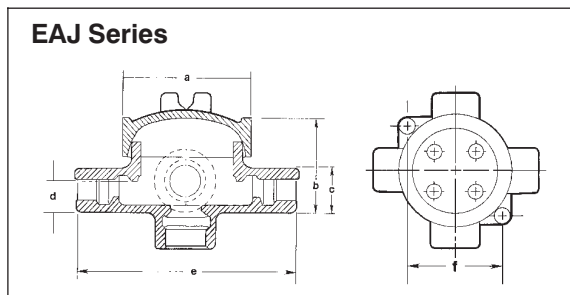
Standard Finishes:

- *Feraloy* iron alloy – electrogalvanized and aluminum acrylic paint
- Aluminum – natural

Size Ranges:

- Hub – 1/2" to 2"
- Cover opening – 3/16" to 5" dia.

Dimensions



Certifications and Compliances:

- NEC/CEC:
 Class I, Division 1 & 2, Groups A†,B,C,D
 Class II, Division 1, Groups E,F,G
 Class II, Division 2, Groups F,G
 Class III
- UL Standard: 886
- CSA Standard: C22.2 No. 30

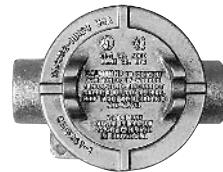
Options:

| Description | Suffix to be Added to Cat. # |
|---|------------------------------|
| Bodies – copper-free aluminum | SA† |
| Covers – <i>Feraloy</i> iron alloy – electrogalvanized and aluminum acrylic paint | WOD |
| <i>Corro-free</i> epoxy power coat | S752 |



EAJB

| Cover Opening Dia. | Hub Size | Cat. # |
|--------------------|----------|---------|
| 3/16 | 1/2 | EAJB16† |
| 3/16 | 3/4 | EAJB26† |
| 3/16 | 1 | EAJB36† |



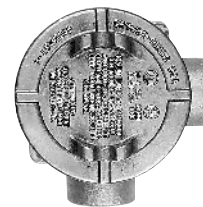
EAJC

| Cover Opening Dia. | Hub Size | Cat. # |
|--------------------|----------|---------|
| 3/16 | 1/2 | EAJC16† |
| 3/16 | 3/4 | EAJC26† |
| 3/16 | 1 | EAJC36† |



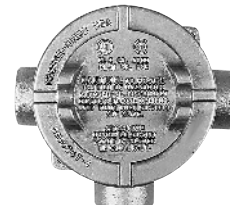
EAJD

| Cover Opening Dia. | Hub Size | Cat. # |
|--------------------|----------|---------|
| 3/16 | 1/2 | EAJD16† |
| 3/16 | 3/4 | EAJD26† |
| 3/16 | 1 | EAJD36† |



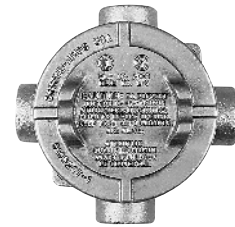
EAJL

| Cover Opening Dia. | Hub Size | Cat. # |
|--------------------|----------|---------|
| 3/16 | 1/2 | EAJL16† |
| 3/16 | 3/4 | EAJL26† |
| 3/16 | 1 | EAJL36† |



EAJT

| Cover Opening Dia. | Hub Size | Cat. # |
|--------------------|----------|----------|
| 3/16 | 1/2 | EAJT16† |
| 3/16 | 3/4 | EAJT26† |
| 3/16 | 1 | EAJT36† |
| 5 | 1 1/4 | EAJT49†† |
| 5 | 1 1/2 | EAJT59†† |
| 5 | 2 | EAJT69†† |



EAJX

| Cover Opening Dia. | Hub Size | Cat. # |
|--------------------|----------|---------|
| 3/16 | 1/2 | EAJX16† |
| 3/16 | 3/4 | EAJX26† |
| 3/16 | 1 | EAJX36† |

EAJ Threaded Covers Flat Covers

| Cover Opening Diameter | Cat. # |
|------------------------|--------|
| 3/16 | EAJ06 |
| 5 | EAJ09 |



Dome Covers

| Cover Opening Dia. | Depth | Cat. # |
|--------------------|-------|---------|
| 3/16 | 2 | EAJ0612 |



Fixture Covers Union Hub Type

| Cover Opening Dia. | Fixt. Stem Size | Cat. # |
|--------------------|-----------------|----------|
| 3/16 | 3/4 | EAJ0687* |



| Cat. # | a | b | c | d | e | f |
|--------|-----|---------|--------|--------|---------|--------|
| 16 | 3/4 | 2 17/32 | 1 1/2 | 3/4 | 5 5/16 | 3 3/32 |
| 26 | 3/4 | 2 25/32 | 1 3/4 | 7/8 | 5 9/16 | 3 3/32 |
| 36 | 3/4 | 2 25/32 | 1 3/4 | 7/8 | 5 9/16 | 3 3/32 |
| 49 | 5/4 | 4 1/16 | 2 3/16 | 1 3/32 | 7 5/16 | 4 3/4 |
| 59 | 5/4 | 4 1/16 | 3 | 1 1/2 | 7 13/16 | 4 3/4 |
| 69 | 5/4 | 4 1/16 | 3 | 1 1/2 | 7 13/16 | 4 3/4 |

* EAJ0687 is listed for Group C & D only.

† Available in copper-free aluminum, add suffix -SA.
 ‡ Form 9 products with 5" cover opening are not suitable for Group A.